

The Edge Entertainment Agency – Quality Entertainment Booking Service

Love Honey, Funky Six Piece Covers Band

Lovehoney is one of the UK's most energetic and sought after bands on the corporate events circuit.

The band was created for people who want to add a cool and classy vibe to their occasion.

The band member's themselves are accustomed to quality events and corporate parties

and have together played for many of the UK's biggest companies at many prestigious venues.

The band is **TOTALLY LIVE** and play unique arrangements to keep the greatest songs sounding vibrant, fresh and exciting.



Lovehoney provide all equipment needed for any event, as well as relevant certificates and insurances including public liability and recent portable appliance test certificates.

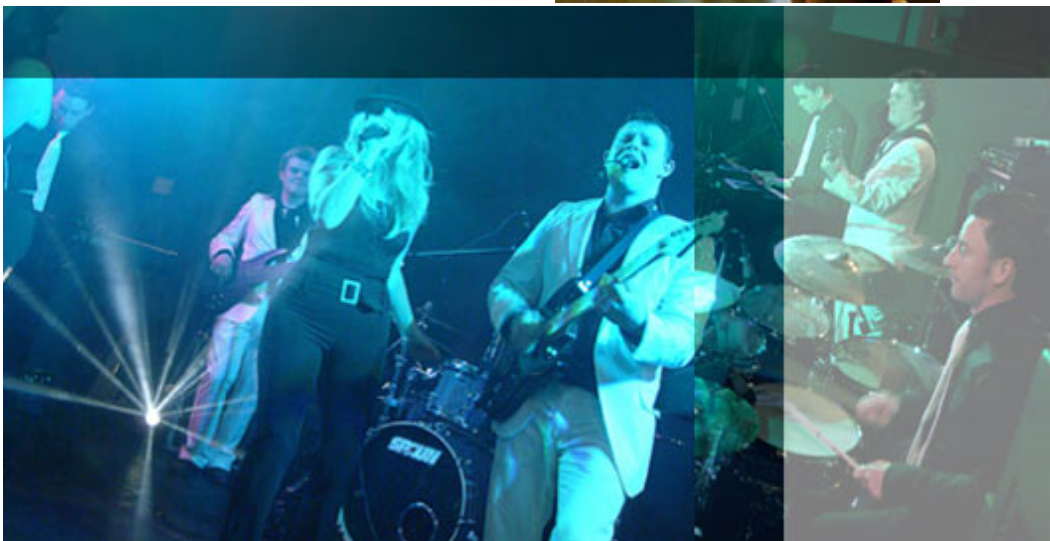
Lovehoney's members are all fully professional musicians and perform using the highest possible equipment.

Lovehoney provide a 3400w DB Fifty Line Pa System and 4800w stage flood lighting



TEL: (UK Freephone) 0800 781 3343 International:- +44 1945 46 55 66

or email info@theedge-uk.com



Just a few of the songs performed by Lovehoney

disco inferno - the tramps
rock your body - justin timberlake
spinning around - kylie
sing it back - moloko
kids - robbie williams & kylie
you should be dancing - bee gees
ladies night - kool & the gang
holiday - madonna
all i wanna do - sheryl crow
time of my life - dirty dancing
lady - modjo
superstition - stevie wonder
this love - maroon 5
toxic - britney spears
crazy in love - beyonce
cosmic girl - jamiroquai
groovejet - sophie ellis bexter

TEL: (UK Freephone) 0800 781 3343 International:- +44 1945 46 55 66

or email info@theedge-uk.com

The Edge Entertainment Agency – Quality Entertainment Booking Service

can't get you out of my head - kylie
billie jean - michael jackson
carwash - rose royce
staying alive - bee gees
loveshack - b52s
fame - irena cara
easy lover - phil collins
rock dj - robbie williams
good times - chic
red alert - basement jaxx
i could be so good for you - minder
free - ultra nate
boogie wonderland - earth wind & fire



CLIENTS

THE BBC
SAUDI ROYAL FAMILY
PHILIPS
LLOYDS TSB
EMI
ERNST & YOUNG
ITV
GRANADA
MGM
CARLTON TV
ROYAL INTERNATIONAL AIR TATTOO
PRICE WATERHOUSE COOPERS
DIRECT LINE
ROYAL BANK OF SCOTLAND
PREMIERSHIP FOOTBALL TEAMS
VIRGIN
BP
VARIOUS CELEBRITY PARTIES

VENUES

THE CONRAD
DORCHESTER
THE GROVE - HERTS
GROSVENOR
BBC TELEVISION CENTRE
SHERATON PARK LANE
FOUR SEASONS
SAVOY
HILTON METROPOLE
ICC
BLENHEIM PALACE
NEC HILTON
THE LANDMARK
SANDHURST
PARK LANE HILTON
WINDSOR
ZOFIN'S PALACE - PRAGUE
GRANDE BRETAGNE - ATHENS

TEL: (UK Freephone) 0800 781 3343 International:- +44 1945 46 55 66

or email info@theedge-uk.com

The Edge Entertainment Agency – Quality Entertainment Booking Service

Here you will find answers to common questions.

What is included in the price?

6 band members, a full 3600w sound system suitable for up to 500 guests, stage lighting, and suitable pre mixed CD between sets.

How long will you play for?

The band usually plays for 120 minutes (which can be broken down into 3 x 40 minutes or 2 x 60 minutes. If required, the band can extend their playing time to 180 minutes for an extra charge.

What time will you arrive?

Our basic quote allows for an arrival time of 5.30 and finish time of 1am. As the band is full time, this is the optimum amount of time that we can devote to each event, taking the travelling into account. Any extensions of these times will incur an extra charge.

How will you arrive?

Most of the band members will arrive together in a people carrier and trailer. Some members will arrive in their own cars. We will need parking at the event, so please contact the band direct if space is short.

How long do you take to set up?

All things going well, the band should be able to set up and sound check within an hour.

Do you need power? If so, how much?

Yes. To be on the safe side we always ask for 3 x 13 amp (standard wall sockets) or a 32 amp supply. We can always scale down the amount of equipment we use if power is an issue.

Have you got any insurance certificates?

Yes. The band is covered for public liability (and the members are covered as individuals as well). We also have our equipment regularly PAT tested, insuring that each item is suitable for its intended job.

Is there anything we need to supply you with?

*The band has strived to make itself totally self contained, so our needs from the booker are very few. We prefer to stay out of peoples way when we are getting changed and in between sets so **a lockable room suitable for 6 people** is essential. **A hot meal and supply of soft drinks** is also required as all band members travel a long way to each event, often resulting in an 18 hour day. If this is not possible to arrange the band will increase the cost a little to account for them to leave the venue after sound check and eat elsewhere before the performance, although eating at the venue is more ideal*

TEL: (UK Freephone) 0800 781 3343 International:- +44 1945 46 55 66

or email info@theedge-uk.com